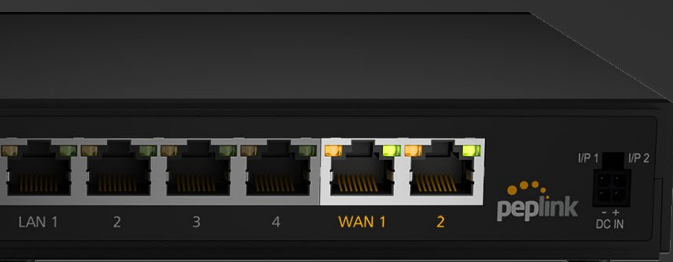




**TAA**  
COMPLIANT

# BOne Plus

Supercharged Connectivity for Remote Offices and Small Businesses

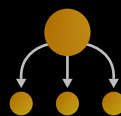


**Dual Ethernet WAN** architecture keeps you connected even when one of your Internet lines goes down



## Seamless **Failover**

Backup connections are always ready to kick in instantly



## Automated **Load Balancing**

Optimize network performance by with advanced load balancing algorithms



## **Traffic** Steering

Ensure applications don't stutter by prioritizing important network traffic

**Built-in cellular modem** for triple-redundancy, low-bandwidth and management applications; includes **eSIM** for zero-touch setup

- VOIP, video calls, POS/payment terminals



Designed for remote locations, reduce dispatches, site visits, and pre-staging work with **InControl2** and **InTouch**

- Instant Internet connectivity out-of-the-box - SIM or BYO eSIM

**Highly cost-effective solution** for the most reliable Internet

- Low cost
- Highly reliable
- Long-term support



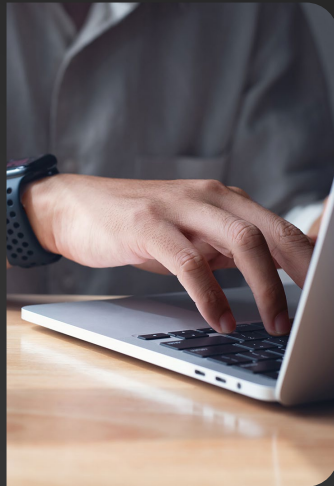
# B One Plus



**SpeedFusion** technology seamlessly bonds multiple Internet connections into one more-reliable Internet feed

## Use Cases

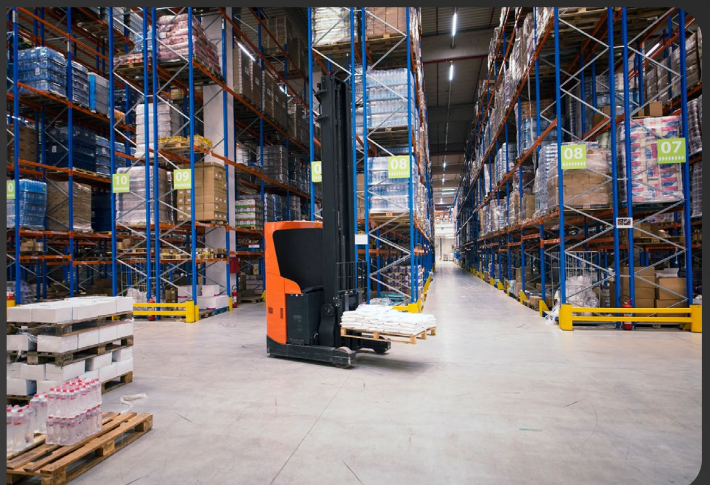
### REMOTE OFFICE

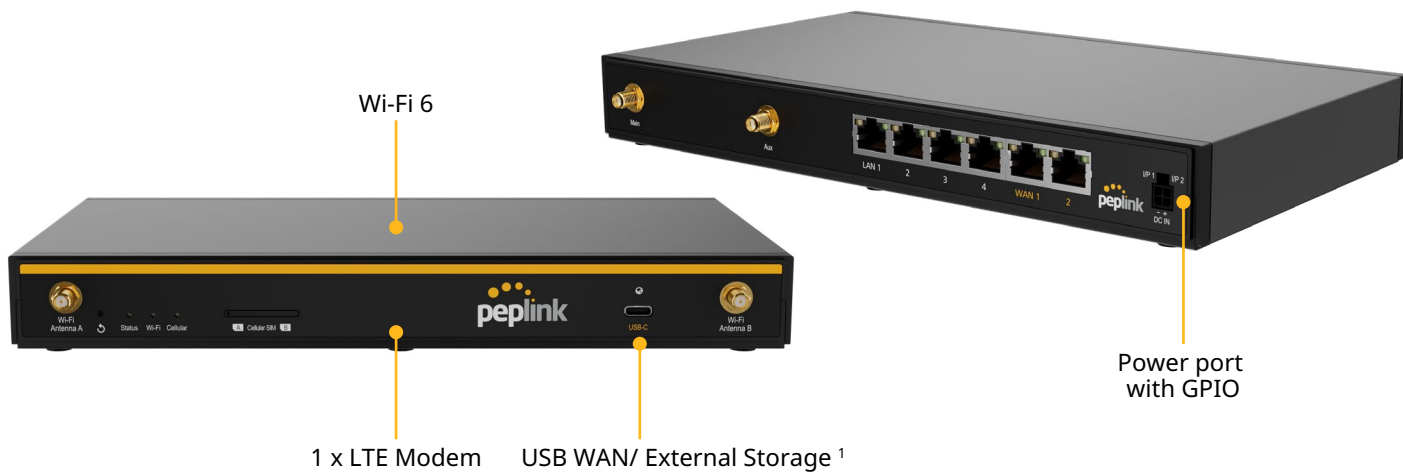


### SMALL BUSINESS



### WAREHOUSE





## Specifications

<b>WAN Interface</b>	2x 10/100/1000M Ethernet 1x Embedded Cellular Modem with a Redundant SIM Slot 1x USB-C Interface	<b>Antenna Connectors</b>	2x SMA Cellular Connectors 2x RP-SMA Wi-Fi Antenna Connectors
<b>LAN Interface</b>	4x 10/100/1000M Ethernet	<b>Power Input</b>	Power Port: 10V – 30V DC AC Adapter: AC Input 100V–240V / DC Output 12V
<b>Wi-Fi Interface</b>	Simultaneous Dual-Band (2.4GHz / 5GHz) Wi-Fi 6, 2X2 MIMO Wi-Fi WAN and/or AP	<b>Power Consumption</b>	6W (nominal), 17W (max. without USB-C output <sup>6</sup> )
<b>SpeedFusion features</b>	Hot Failover <sup>2</sup> / Smoothing <sup>2</sup> / Bandwidth Bonding <sup>2</sup>	<b>Dimension</b>	10.31 x 6.33 x 1.31 inches / 262 x 161 x 33.5 mm
<b>Number of SpeedFusion VPN Peers</b>	2 / 5 / 10 / 20 <sup>3</sup>	<b>Weight</b>	1.7 pounds / 761 grams
<b>Router Throughput</b>	1Gbps	<b>Operating Temperature</b>	- 40° – 113°F / - 40° – 45°C
<b>SpeedFusion VPN Throughput</b>		<b>Humidity</b>	10% – 90% (non-condensing)
- No Encryption	400 Mbps	<b>Certifications</b>	FCC, CE, RoHS
- 256-bit AES	200 Mbps	<b>Package Content</b>	1x B One Plus 2x LTE/5G Antennas 2x Dual Band Wi-Fi Antennas 1x 12V 3A 4 Pin Power Supply (ACW-672)
<b>Recommended Users</b>	1-150	<b>SIM Options</b>	Nano-SIM (4FF) Peplink eSIM <sup>7</sup> BYO eSIM (2 profiles) <sup>7</sup> RemoteSIM from SIM Injector <sup>8</sup> FusionSIM <sup>8</sup>
<b>AP Controller</b>	Standard	<b>Warranty</b>	1-Year Limited Warranty
<b>Maximum Number of AP Supported</b>	30 / 50 <sup>4</sup>		
<b>Cellular Data Rate <sup>5</sup> (Downlink / Uplink)</b>	CAT-4: 150 Mbps / 50 Mbps		

<sup>1</sup> Requires LIC-DOC license and firmware 8.5.2 or above to enable Docker.

<sup>2</sup> Requires a PrimeCare subscription, complimentary for the first year.

<sup>3</sup> 5 SpeedFusion VPN Peers are enabled with PrimeCare Subscription. 10 or 20 SpeedFusion VPN peers can be enabled with software license (PVN-LC-10 and PVN-LC-20).

<sup>4</sup> Available with licence add-on (AP-LC-50).

<sup>5</sup> Theoretical maximum data rates.

<sup>6</sup> USB-C Output : 5V at 2A can be delivered to power the MAX Adapter or other USB dongles for USB WAN.

<sup>7</sup> Models with selected SKU support eSIM. Details can be found [here](#).

<sup>8</sup> RemoteSIM and FusionSIM are compatible with hardware version 2 or above.

## Ordering Information

Product Code	Regions <sup>^</sup>	LTE Bands	3G Bands
B-ONE-PLUS-LTE-US-T-PRM Embedded Modem: 1 x CAT-4	North America*  *US Carrier Certifications: AT&T, T-Mobile, Verizon, FirstNet	B2, B4, B5, B12, B13, B14, B66, B71	B2, B4, B5
B-ONE-PLUS-LTE-E-T-PRM Embedded Modem: 1 x CAT-4	APAC, EMEA	B1, B3, B5, B7, B8, B20, B38, B40, B41	B1, B5, B8
B-ONE-PLUS-LTE-MX-T-PRM Embedded Modem: 1 x CAT-4	Latin America	B1, B2, B3, B4, B5, B7, B8, B28, B40	B1, B2, B3, B4, B5, B8

<sup>^</sup> Regions are for reference only. For specific location compatibility, please refer to the bands.

## Featured Add-on

Product Code	Description
PRM-A-1Y / PCP-A-1Y	PrimeCare A / PrimeCare+ A (1-Year)
PRM-A-2Y / PCP-A-2Y	PrimeCare A / PrimeCare+ A (2-Year)
PRM-A-4Y / PCP-A-4Y	PrimeCare A / PrimeCare+ A (4-Year)
ACW-791	4-Pin Micro-Fit to USB-C Power Cable
ACW-634	10ft / 3m DC Power Cable
ACW-235	Indoor Very Wideband Cellular Antenna
ACW-341	Dual-Band Indoor Wi-Fi Omni Antenna in Black (RP-SMA)
ANT-SLM-22G-S-B-6	Slim 22G - 2x2 MIMO Cellular and Wi-Fi Antenna System with GPS (Black)

## Deep Dive

<b>Software</b>	Pepwave MAX Firmware	<b>Networking</b>	NAT and IP Forwarding Static Routes Port Forwarding Many to One, One to One NAT NAT Pool SIP ALG, H.323 ALG UPnP, NAT-PMP
<b>WAN</b>	Support for PPPoE, Static IP, DHCP WAN Link Health Check Bandwidth Allowance Monitor Support for Dynamic DNS services		
<b>LAN</b>	DHCP Server for LAN Clients Extended DHCP Option DHCP Reservation DNS Proxy for LAN Clients VLAN on LAN Support	<b>AP Controller</b>	Support for Pepwave AP Series Auto AP Discovery Auto AP Firmware Management AP Profile Configuration Wi-Fi Usage Statistics
<b>Security</b>	Stateful Firewall DoS Prevention Web Blocking	<b>Captive Portal Support</b>	Support for Wired and Wireless LAN clients Support RADIUS Authentication Time and Usage Quotas on Open Access Mode Built-in Customizable Splash Page
<b>Complete VPN Solution</b>	SpeedFusion VPN/SpeedFusion <ul style="list-style-type: none"><li>• Hot Failover</li><li>• Site-to-Site VPN</li><li>• 256-bit AES Encryption</li><li>• Pre-shared Key Authentication</li><li>• Dynamic Routing</li></ul> X.509 Certificate Support IPsec VPN (Network-to-Network)	<b>Device Management</b>	Web Administrative Interface Command Line Interface InControl Cloud Management Email Notification Active Client & Session Lists Bandwidth Usage Statistics Syslog Service SNMP v1, v2c and v3
<b>Advanced QoS</b>	Individual Bandwidth Limit Application Prioritization <ul style="list-style-type: none"><li>• SIP, HTTPS, VPN QoS</li><li>• Custom Application QoS</li></ul>		